

## THEBERTON AND EASTBRIDGE PARISH COUNCIL

### MINUTES OF THE THEBERTON AND EASTBRIDGE PARISH COUNCIL MEETING HELD AT JUBILEE HALL, THEBERTON ON WEDNESDAY 14<sup>th</sup> AUGUST AT 7:00PM.

#### 1. Attendance and apologies

##### Attendees:

Cllr. Stephen Brett – Chair  
Cllr. Hazel Collins  
Cllr. Paul Collins  
Cllr. Steven Morphey  
Cllr. Graham Ward  
Cllr. Robert Flindall

##### Apologies for absence:

District Cllr. Sarah Whitelock – apologised  
District Cllr. Tom Daly – apologised  
Cllr. Daryl Ash - apologised  
Cllr. Nat Bacon - apologised

##### Members of the public:

No members of the public were present

##### In attendance:

County Cllr. Richard Smith  
District Cllr. Katie Graham  
Honor Houlding- Clerk/RFO

Theberton and Eastbridge Parish Council approved the apologies and absences from this month's meeting. All in favour.

#### 2. To receive declarations of interest and to consider requests for dispensations

None.

#### 3. Public Forum

- a) Members of the public may address the Council on any agenda item

No members of the public were present.

- b) To receive a report from the County Councillor

County Councillor Richard Smith began by announcing the Tour of Britain which will take place in and around Suffolk on 8<sup>th</sup> September. He continued to state that Suffolk County Council are doing all they can to have the race pass over the new Gull Wing Bridge in Lowestoft, which will be officially opened in November 2024 by the Princess Royal.

The new labour MP Jenny Riddell-Carpenter came for a briefing at Suffolk County Council offices to be briefed on local issues. Since the election on the 4<sup>th</sup> of July, the County Council are awaiting on more details from the new government which are likely to become clear in September and with the new budget in October 2024.

County Councillor Richard Smith explained that the County Council are waiting to hear whether the road improvement projects on the A12 and A14 at the Seven Hills roundabout will take place under the new government. £55 million had previously been promised however a timeline of completion of the project was never put in place. County Councillor Richard Smith concluded that the improvement of infrastructure on the roads was necessary due to the new housing estate at Martlesham which will provide over 2000 new homes. The County Council are concerned that the additional traffic due to housing and the Energy Projects in the County will affect tourism if the roads are not improved and travel will be severely affected.

County Councillor Richard Smith also expressed his concern with regards to Hurts Hall, Saxmundham, where proposals have been presented for a large bridge construction over the river Fromus. Saxmundham Town Council and the County Council have objected to the proposal on grounds of unsuitability of the size of the bridge and upheaval building of the bridge will create. The Friston Solar Farms have also been very unpopular with residents, however despite local Council's best efforts to abolish the plans the government have the final decision leading to a depressing future of East Suffolk and the various proposals making our area 'The Energy Coast'.

Cllr. Graham Ward highlighted that the heightened use of electric across the County is due to the consequences of encouraging the use of electric cars and vehicles and asked as to why not more is being done to research Hydrogen as a more suitable eco-friendly solution to the countries Energy shortfall.

- c) To receive reports from the District Councillors

Cllr. Katie Graham began by summarising the August Suffolk County Council Report attached as **Appendix I**.

#### **4. Minutes and Matters Arising**

- a) To approve as accurate the minutes of the Parish Council Meeting held on 3<sup>rd</sup> July 2024

[ACTION: Clerk to add approval of minutes to next month's agenda to allow time for Councillor's to read and approve the minutes of the meeting on the Parish Council website.](#)

- b) Matters arising

The Clerk introduced some correspondence with regards to the monthly collection of the village newsletter. Cllr. Hazel Collins offered to stand in to collect the newsletter each month if required.

#### **5. Energy Projects**

- a) To receive an update from Cllr. Paul Collins

Cllr Paul Collins Energy Report attached as **Appendix II**.

The Council discussed the use of the layby on the B1122 opposite the Eastbridge Road turning being used as a waiting area for SZC vehicles which has been stated to not be approved by the project.

[ACTION: Clerk to finalise email to SZC requesting update from actions on B1122 meeting held on 19<sup>th</sup> June 2024 and other actions awaiting response.](#)

#### **6. Planning**

- a) To consider planning application DC/24/1709/FUL - New access to land off Church Road, Theberton, Suffolk – Deadline 15<sup>th</sup> August 2024

Cllr. Robert Flindall summarised the planning application, which plans to add urban infrastructure to the local area. The Council agreed that no comment was required subject to there being no objections from highway authority.

[ACTION: Clerk to reply no comment to planning application DC/24/1709/FUL - New access to land off Church Road](#)

- b) To consider planning application CC/0083/24/DoR/EA1N and SCC/0084/24/DoR/EA2 Scottish Power Renewables, Offshore Wind Farms.

Cllr. Robert Flindall summarised the above application to the Council. The Council agreed that there was no requirement to respond and therefore no further actions to take place.

- b) Market Square, Leiston – Consultation

Cllr. Robert Flindall presented the proposed plans for Market Square and other locations in Leiston to improve the local area. It was noted that no reference had been made in the proposal to funding of the project.

b) East Suffolk Planning Forum Presentation

Cllr. Robert Flindall summarised the East Suffolk Planning Forum Presentation. Continuing to discuss the benefits of writing a Neighbourhood Plan for Theberton and Eastbridge, where there is funding available to assist with the project and offered to put together a proposed budget and expenditure for the Council.

[ACTION: Clerk to add creating a Theberton and Eastbridge Neighbourhood Plan to next month's agenda for consideration.](#)

**7. Clerk/Councillors' Reports**

a) Platinum Heritage Trail

Cllr. Steven Morphey announced that he had visited Long Shop Museum in Leiston but is yet to receive a response from the local Zeppelin expert with regards to photographs for the project. The Platinum Heritage Trail agreed to arrange their next meeting at the end of September 2024.

[ACTION: Clerk to write letterhead letter to Long Shop requesting meeting with Zeppelin expert/archivist.](#)

[ACTION: PHT Group to send their completed actions to Clerk to update the report.](#)

b) Eastbridge Common and Eastbridge Playing Field Tree Planting Project

Cllr. Hazel Collins announced that she will be meeting Transition Woodbridge at Eastbridge Playing Field to discuss possible planting locations, tree types and information on how to approach the project.

[ACTION: Hazel to report back on Transition Woodbridge meet at September's meeting.](#)

d) Funeral Bier Relocation

Cllr. Stephen Morphey explained that at his meeting at the Leiston Long Shop Museum that a Zeppelin exhibition is in planning stages for March 2025 and that the Museum were very interested in housing the funeral bier.

Cllr. Stephen Brett proposed that Theberton and Eastbridge Parish Council would allow for the bier to be loaned to the Long Shop Museum under the proviso that the item continues to owned by Theberton and Eastbridge Parish Council. All in favour.

[ACTION: PHT Group to send their completed actions to Clerk.](#)

e) Yoxmere Fisherman

Cllr. Stephen Brett explained he had discussed the Yoxmere Fisherman request for Parish Council Donation with the Chairman of Westleton Parish Council. He confirmed that Westleton Parish had pledged to donate the requested £500 donation for the first year. The Council discussed available funding such as the Sizewell C Community Fund in helping to raise money to secure the longevity of the Yoxmere Fisherman.

[ACTION: Clerk to speak with Yoxmere Fisherman and forward funding opportunities designed to help local projects to the Administrators.](#)

f) Strategic Objectives and Grants

Cllr Robert Flindall summarised the Strategic Objectives and explained there could be grants available to assist with the planting of a Community Orchard at Eastbridge Playing Field and playing Eastbridge Common.

[ACTION: Cllr. Robert Flindall to report on available funding for the tree planting project at Eastbridge Playing Field and playing Eastbridge Common.](#)

g) Speed Indicator Device

Cllr Paul Collins summarised the 14<sup>th</sup> of July Speed Indicator Reports which is attached as **Appendix III**. The report shows that the number of people exceeding 30mph is reducing since the implementation of the 30mph speed limit along the length of the B1122.

h) Plug In Suffolk Application

Cllr. Graham Ward discussed the meeting which was held on 26<sup>th</sup> of July and hosted by Connected Kerb, attended by Cllr. Graham Ward, Chairman of Community Council, Steve Nicholls and the Clerk. The proposal is to install two charging points in the car park of Theberton Village Hall to benefit visitors and residents of the community.

i) Police Crime Report

The Clerk summarised the May and June and Police Crime Reports which are attached as **Appendix IV and V**.

j) Thermal Imaging Cameras

The Clerk summarised the 'Keep the Heat Campaign' offering free use of a Thermal Camera for assessing heat loss of resident's homes to which a resident had previously expressed their interest. The Council agreed they would like to participate in the campaign.

[ACTION: Clerk to express interest in 'Keep The Heat Campaign' by 30<sup>th</sup> August 2024.](#)

k) Outstanding Actions List

None.

## 8. Administration

a) To note the Internal Audit Report for the financial year 2023-2024 by the Internal Auditor

The Council noted and approved the Internal Audit Report for the financial year 2023-2024 and congratulated the Clerk.

[ACTION: Clerk to add the Internal Audit Report for the financial year 2023-2024 by the Internal Auditor to the Parish Council website.](#)

b) To note the and approve the Review of the Effectiveness of the Internal Audit for the financial year 2022-2023

The Council noted and approved the Review of the Effectiveness of the Internal Audit for the financial year 2022-2023.

[ACTION: Clerk to add the Review of the Effectiveness of the Internal Audit for the financial year 2022-2023 to the Parish Council website.](#)

## 9. Finance

a) To note the latest financial position

It was proposed by Cllr. Stephen Brett and seconded by Cllr. Graham Ward and it was agreed that the latest financial position to be a true record. All in favour.

b) To agree to ratify the following payment:

Details	Payee	Amount	Power
Public Liability Insurance	Community Action Suffolk	£592.61	LGA 1972 s.111

It was proposed by Cllr. Stephen Brett and seconded by Cllr. Graham Ward and it was agreed to authorise ratified payment listed above. All in favour.

b) To authorise the payments listed below:

Details	Payee	Amount	Power
Clerk's Salary	Honor Houlding	£364.55	LGA 1972 s.112
Broadband	XLN/Daisy Communications	£38.81	LGA 1972 s.19
Internal Audit Service	SALC	£212.40	LGA 1972 s.111
Defibrillator Training	Community Heartbeat	£210.00	LGA 1972 s.139 (1)

It was proposed by Cllr. Hazel Collins and seconded by Cllr. Paul Collins and it was agreed to authorise the payments listed above. All in favour.

#### 10. Correspondence

To review the correspondence received between 1<sup>st</sup> July 2024 and 12<sup>th</sup> August and take action as appropriate.

The Clerk summarised the above dated correspondence. The Council agreed no further actions were required.

#### 11. Questions to the Chair/Items for the Next Agenda

Cllr. Robert Flindall discussed the recent issues for residents of Eastbridge with regards to the phone line and internet interruption.

#### 12. Next Meeting

To agree the date and time of the next meeting of the Council which is scheduled for Wednesday 11<sup>th</sup> September 2024 at 7:00 pm at the Jubilee Hall.

Honor Houlding

Parish Clerk

Meeting ended at: 21.10

**August 2024 Parish Report**  
**East Suffolk Council GLI Group – Councillor Update**

**Winter grant scheme funding available for Warm Welcomes and cost of living support projects**

Despite the season, East Suffolk Council is asking people to think ahead to winter – and how their communities could provide support for residents who need it during the colder months.

Community groups, voluntary organisations, and town and parish councils are being invited to apply for funding available through two winter grant schemes being launched on Monday 9 September.

Depending on the size of the community, grants of up to £3,000 will again be available for ‘Warm Welcomes’ to provide somewhere safe, warm and welcoming for people who may be struggling to meet the cost of living.

Part-funded through the UK Shared Prosperity Fund (UKSPF), the scheme aims to provide a network of venues for people to keep warm, socialise, connect with others, and have the opportunity to access additional information, advice and support from local partners.

East Suffolk Council would ideally like to hear from groups and organisations capable of operating a venue for at least eight hours a week, offering something additional to their community this winter, such as support around the cost of living and inequalities, access to free or reduced-cost food, activities to reduce social isolation, improved wellbeing and a warm community welcome.

Information about the Warm Welcomes will be available on the [Warm Welcomes grant page](#) of the East Suffolk Council website from early September.

Meanwhile, the Cost of Living (COL) grant scheme, funded by Suffolk County Council through the Suffolk Collaborative Communities Board, will offer grants of up to £2,000 to support a wider range of smaller projects, also focussed on keeping people warm, well, fed and connected to others in the community this winter, but not only on bringing people together in a physical meeting space.

During the previous two years of the scheme, more than 50 projects have been supported by COL grants for activities such as ‘Healthy Bites on a Budget’ cooking classes for families, smaller scale Warm Welcomes open for an afternoon each fortnight, [Community Pantry](#) top-ups and more.

Information about the COL grant scheme will be available on the [Community grants and funding page](#) of the East Suffolk Council website, also from early September.

Cllr Sarah Whitelock, Cabinet Member for Communities, Culture, Leisure and Tourism, said: “It might seem odd to be thinking about winter in the middle of summer, but we want to make sure that projects are up and running by the time the weather changes.

“These grant schemes are part of the Council’s Ease the Squeeze programme, which has been running since 2022 to help residents across the district.

“We want a wide range of local groups to start thinking about what they could do to support residents this winter ahead of the launch in early September.”

For more information about the Warm Welcomes and Cost of Living grant schemes, email [communities@eastsoffolk.gov.uk](mailto:communities@eastsoffolk.gov.uk).

The closing date for applications is Monday 30 September – allowing all projects to be considered by a grant panel in time for launching by November.

**Environmental Impact Strategy plants seeds for addressing climate and biodiversity emergencies**

## **East Suffolk Council has given unanimous support for a strategy setting out its commitment to protecting the environment and tackling climate change.**

The Environmental Impact Strategy was adopted by Full Council on Wednesday 24 July and forms a core pillar of the overarching Our Direction 2028 vision for East Suffolk over the next four years.

The strategy sets East Suffolk Council's environmental vision and priorities for delivering positive climate, nature, and environmental impacts through its decisions and actions.

Cllr Tom Daly, East Suffolk's cabinet member for Energy and Climate Change, said the Council had "planted the seeds for the future" by adopting the strategy with unanimous support.

[Our Direction 2028](#) was approved by Full Council in November following significant consultation and development. As well as Environmental Impact, its four strategic themes include Sustainable Housing, Tackling Inequalities, and Thriving Economy, and aim to promote a bright, green, open, free, and fair future for East Suffolk.

The most important priorities to residents who took part in consultation on the Environmental Impact theme of Our Direction 2028 were supporting sustainable transport, restoring ecosystems and biodiversity, working in partnership to manage coastal adaptation and resilience, a continued commitment to Net Zero by 2030, and supporting, promoting and implementing green tech.

All are now among the Environmental Impact Strategy's key priorities, along with a focus on reduction, re-use, and recycling of materials, encouraging food self-sufficiency, and preserving and maintaining the district's beauty and heritage.

Cllr Daly said: "Our environmental impact should be a key consideration in every decision we make, and every action we take as a local authority.

"The Environmental Impact Strategy not only sets out how we approach the challenges of climate change, but also how we can reap the multiplier benefits of changing the way we use and consume resources."

East Suffolk Council has committed to collaborate with other local and national organisations to deliver the strategy's priorities, including by working with partners to address important national issues such as low carbon transport and decarbonising private homes.

Delivery of the strategy's priorities will be monitored by a cross-party Environment Task Group and Officer Environmental Impact Delivery Group.

A key performance indicator dashboard will also track progress of all environment-themed areas, including activities related to climate change.

Cllr Sally Noble, East Suffolk's cabinet member for Environment, added: "There is an urgent need for us all to take action to address what has become an ecological emergency.

"We have a duty to our residents, wider society, and future generations, to ensure that our environment impact is at the forefront of our work and feeds into our other priorities for things like housing, equality and the economy."

### **[New strategy to encourage tree planting across East Suffolk](#)**

**A new focus on increased tree planting across East Suffolk has been agreed to improve biodiversity and help tackle the climate crisis.**

A motion resolving to boost tree planting, proposed by Cllr Sally Noble, East Suffolk's cabinet member for the Environment, was passed at a Full Council meeting on Wednesday 24 July.

It was agreed that the Council would develop a Tree and Hedgerow Strategy, seeking input from residents, community groups, and experts to identify key priorities and requirements for tree and hedgerow planting and management of existing trees across the district.

Currently, forests cover just 12% of land in the UK, whereas Europe's total land area has forest cover comprising 47%. The Tree and Hedgerow Strategy would aim to enable 250,000 trees to be planted across East Suffolk, increasing canopy cover by 1%.

Landowners play the key role in protecting and planting trees and will be invited to suggest spaces suitable for tree planting. Ongoing work to map the tree canopy in East Suffolk will be completed, creating a map of council-owned land where there are opportunities for tree planting and feeding-in to Suffolk's developing 'Local Nature Recovery Strategy'.

Cllr Noble said: "Trees are vital for protecting our environment, removing carbon dioxide and pollutants from the air, reducing flooding, and providing essential wildlife habitats. Protecting existing trees and planting new trees is crucial in tackling the climate, biodiversity and ecological emergencies already declared by the Council. The Council already has a good record of tree planting initiatives, and we now want to really enhance these efforts and aim to plant thousands more trees across the district."

The Council will also commit more resources to supporting the work of town and parish councils, as well as local tree wardens and community volunteers, who all perform a fundamental role in protecting and managing new and existing trees. Working with Suffolk County Council, East Suffolk Council will also promote the importance and value of street trees.

### [Have your say on new planning document](#)

**East Suffolk residents and businesses are invited to have their say on a new planning document that provides guidance for the conversion of buildings to Houses in Multiple Occupation (HMO) in the former Waveney area.**

A consultation on the draft HMO 'Exceptional Circumstances' Guidance Note, which provides guidance on the determination of planning applications for conversions of buildings to HMOs, begins on Wednesday 7 August.

HMOs can be the most affordable kind of accommodation, especially for those not eligible for other forms of affordable housing, but an over-proliferation of such properties and/or poor-quality conversions can sometimes cause amenity and other concerns.

Within the former Waveney area, where the Waveney Local Plan applies, applicants are therefore required to demonstrate 'exceptional circumstances' for the conversion of buildings to HMOs to be justified. This draft Guidance Note seeks to provide greater clarity and certainty as to how exceptional circumstances could, in principle, be demonstrated, recognising the scale of the housing affordability crisis.

Cllr Kay Yule, East Suffolk Council's cabinet member for Planning and Coastal Management, said: "Houses in Multiple Occupation can offer a convenient and affordable option for many people, and there is a shortage of such accommodation, but these properties can also create potential concerns about local amenity and pressure on local services.

"That means that criteria against which proposals for a change of use to an HMO are considered require applicants to demonstrate exceptional circumstances.

"I would encourage residents and businesses to engage with this consultation and have their say on the Draft HMO 'Exceptional Circumstances' Guidance Note. If adopted, the document will be a material consideration in determining planning applications."



Comments on the Draft HMO 'Exceptional Circumstances' Guidance Note must be submitted by 5pm on Wednesday 18 September 2024.

You can view and comment on this consultation on the [Planning Policy Consultations](#) page of the East Suffolk Council website.

Comments can also be emailed to [planningpolicy@eastsuffolk.gov.uk](mailto:planningpolicy@eastsuffolk.gov.uk) or sent to East Suffolk Council, Planning Policy and Delivery Team, Riverside, 4 Canning Road, Lowestoft, Suffolk NR33 0EQ.

Paper copies of the Draft HMO 'Exceptional Circumstances' Guidance Note have been made available for inspection at all libraries in the former Waveney district and the Council's Customer Service centres at The Marina, Lowestoft, and Woodbridge Library. For information on locations and opening hours please see the [Suffolk Libraries](#) website and [Customer Services](#) page on the East Suffolk Council website. Please note, the Council's other Customer Service centres do not have the facilities for the storage of consultation documents. However, physical copies are available at the libraries where these are located.

All comments received will be considered when finalising the HMO 'Exceptional Circumstances' Guidance Note.

### Tens of thousands utilise Digital Towns programme

More than 80,000 people have logged onto free Wi-Fi while visiting East Suffolk towns during the first two years of a project to boost connectivity and business.

The Digital Towns programme was launched by East Suffolk Council in June 2022 to support market towns through the installation of free public Wi-Fi, digital footfall counters and marketing platforms.

It followed a successful pilot in Framlingham and included a Digital Springboard service offering access to support, resources, workshops and grants for businesses hoping to create or strengthen online presence.

This June, two years since its launch, the programme was recognised among seven national finalists in the Digital Impact category of the Local Government Chronicle awards.

As well as more than 80,000 free Wi-Fi users, Digital Towns has attracted 20,000 promotional email subscriptions and logged millions of movements on footfall sensors designed to provide more insight into shopping habits to help towns and businesses improve the town centre experience.

Under the Digital Towns programme, free public Wi-Fi has been introduced in Aldeburgh, Beccles, Bungay, Felixstowe, Framlingham, Halesworth, Leiston, Lowestoft, Saxmundham, Southwold and Woodbridge, helping people save on the cost and potential interruption of mobile coverage, while encouraging them to stay in town centres for longer.

### [East Suffolk Free Wi-Fi](#)

Subsequently collected data has provided the impetus for new town websites, marketing resources and bids to extend free Wi-Fi zones.

Supported by funding from the Getting Building Fund and New Anglia Local Enterprise Partnership's Innovative Projects fund, the technology has enabled better understanding around the number of visitors to towns, busiest periods, average time spent in town centres and much more – enabling East Suffolk Council's Economic Development team to provide tailored support for local businesses and provide data-based evidence to support ongoing projects.

Meanwhile, the [Digital Springboard](#) has helped boost the digital skills and online presence of more than 200 businesses.

Cllr Toby Hammond, East Suffolk's cabinet member for Economic Development and Transport, said: "I'm delighted to see the Digital Towns programme having a measurable, positive impact on local businesses, with 71% of Digital

Springboard users reporting improved performance and 70% of free Wi-Fi users saying the service improved their experience and encouraged them to stay longer.

“These discernible differences can help drive digital adoption and unlocks further potential benefits for our towns.”

### **New brand launched to help Suffolk Coast get Wildlife Wise**

**A project working with local residents and visitors to prevent disturbance and damage to wildlife and habitats along the Suffolk Coast has been given a fresh new look.**

Wildlife Wise, the new brand for the Suffolk Coast Recreational Disturbance and Mitigation Strategy (RAMS), was launched during a recent tour of some of the Suffolk Coast’s most important and sensitive habitats and wildlife areas.

The Suffolk Coast’s special habitats and wildlife make it an incredible place for local residents and visitors and also has several international-level designations which reflect its beauty and importance. These designations include Special Protection Areas (SPA) designated for the area’s rare birds, Special Areas of Conservation (SAC) designated for rare habitats, plants and invertebrates, and also Ramsar Sites which are wetlands of international importance.

Outdoor recreational activities such as walking, running, cycling, dog walking, paddle-boarding, boating and kitesurfing along the Suffolk Coast can unintentionally damage habitats and disturb birds and other wildlife, which have not evolved to deal with the large numbers of people using these areas.

Wildlife Wise is encouraging people to enjoy nature and share these spaces with wildlife by followings some simple steps:

- Keep you and your dog on the path. Many birds nest on the ground in the areas around estuaries, beaches, heathlands and grasslands. The birds will often be well camouflaged, and both you and your dog can easily scare adult birds away from their nests or you could step on chicks without realising.
- In autumn and winter, birds have often travelled thousands of miles to spend the winter on the Suffolk Coast feeding and resting. Therefore, it’s important to keep dogs on the path, or on a short lead if you need, to prevent nesting and breeding birds from being disturbed and reducing their chances of survival.
- Avoid walking on plants on beaches.
- Do not allow your dog to chase wildlife or farm animals.
- Always clean up after your dog – dog mess can damage habitats and can cause disease.
- Follow any signs which are there to protect you, your dog and wildlife, or to allow land management, nature conservation or farming work to be carried out easily and safely.

Wildlife Wise aims to prevent additional recreational pressure on these important coast and heathland sites. As part of the project, engagement and educational activities will be developed to work with communities and visitors to the sites. The first two Wildlife Wise rangers will be out visiting these wildlife sites and speaking with people within the next few months.

Cllr Kay Yule, East Suffolk Council’s cabinet member for Planning and Coastal Management said: “Wildlife Wise will help to raise awareness of the importance of protecting these sites for birds and other wildlife and show how everyone can play a part in cherishing, respecting and protecting wildlife and habitats along the Suffolk Coast. East Suffolk has miles of stunning coastline which offers a wealth of opportunities for residents and visitors to explore and

pursue leisure activities to benefit their health and wellbeing however we want to help people enjoy these areas without impacting on the local wildlife.”

Cllr Carole Jones, Ipswich Borough Council Portfolio Holder for Planning and Museums, said: “As Suffolk continues to flourish as a destination for a variety of recreational activities, this partnership is an important step in ensuring our coastline’s habitats and wildlife are protected.

“Although many wouldn’t associate Ipswich with the coastline our 470-acre Orwell Country Park opens out onto the tidal Orwell estuary which is of international importance for wildlife, providing habitats for approximately 50,000 over-wintering geese, wading birds and fish that are attracted by the vast numbers of invertebrates living in the mudflats. The estuary is designated as a Special Protection Area (SPA), a Site of Special Scientific Interest (SSSI) and as a Ramsar site.

“This collaborative approach means we can work together to engage and guide visitors at all our protected areas to positively change and build behaviours to protect and conserve nature.”

Cllr Sallie Davis, cabinet member for heritage, planning and infrastructure at Babergh District Council said: “This partnership has already proved valuable for our wildlife and habitats in Babergh. It enabled fencing to be put in place to create safe havens at Shotley for ground-nesting birds and, ringed-plover chicks have hatched as a result. This is a great success and just one of the ways this partnership will benefit our area.”

Cllr Andrew Stringer, cabinet member for heritage, planning and infrastructure for Mid Suffolk District Council, said: “We enjoy the benefits of having Suffolk’s beautiful coast on our doorstep and want to encourage people to continue to visit, but we must also do everything we can to protect wildlife and habitats. This partnership helps that goal, and we look forward continuing this collaborative approach.”

Simon Amstutz, from Suffolk & Essex Coast & Heaths National Landscape, said: “It is great to see the superb new branding and the scheme will be an incredible boost to help everyone to enjoy the outstanding coast while ensuring wildlife can thrive.”

Jo Wright, Natural England manager for Suffolk, said: “We are delighted with the success of the protective fencing for ground nesting birds in Shotley. Due to previous disturbance, this is the first time Natural England has recorded breeding ringed plovers in East Suffolk. We’re hopeful that this will be the first of many more ringed plover and oystercatcher chicks in the future.”

The new Wildlife Wise brand logo features a bittern, a bird once extinct in the UK which has made a resurgence, with the bittern population on the Suffolk Coast playing a huge part in the conservation success story.

One of the first projects initiated through the project has already started to benefit local wildlife. Funded by Wildlife Wise and led by the Suffolk and Essex Coast and Heaths National Landscape and Natural England, two sections of protective fencing were installed on the estuary beach in the Shotley area last spring. This was to protect birds from high numbers of walkers and dogs. There had previously been too much disturbance for breeding success however in the first year since the fencing has been installed, two ringed plover chicks were born and an oystercatcher on her eggs was also spotted. This year, four ringed plover chicks were spotted by a volunteer, with two nesting pairs now in the area. This, along with the sighting of an oystercatcher chick, demonstrates how positive this project could be for wildlife on the Suffolk Coast.

Earlier this month, councillors from the partnership councils were taken on a tour of the Shotley Peninsula mitigation project, Orwell Country Park, Sutton Heath and Shingle Street.

### Nautilus Interconnector frustration

Cllr Tom Daly, East Suffolk Council's Cabinet Member for Energy and Climate Change has expressed his anger and disappointment having learned that the Nautilus Interconnector proposal - proposed by National Grid Ventures and connecting the UK with Belgium, which had been looking to connect at the Isle of Grain in the Thames Estuary - is possibly coming back to East Suffolk to be connected at Friston.

Cllr Daly said: "This is yet another huge and incongruous industrial development in our precious countryside to be seen alongside all the other proposals this community is being swamped by. Ofgem – the energy regulator – issued a press release in March 2024, where it was announced that it did not approve the Isle of Grain proposal because the constraint costs. Whilst acknowledging that decision, I never anticipated that Friston would come back on the table.

"Therefore, I was incredibly frustrated to learn on 15 July 2024 that Ofgem had announced that it is consulting on the possibility of Nautilus connecting once again at Friston within East Suffolk. The justification presented for this change in tack includes there being sufficient capacity in the electricity system at Friston meaning that the cost of connecting Nautilus here is lower than at the Isle of Grain as there are fewer reinforcements and upgrades needed.

"This makes it very clear that whilst cost is an important factor, it trumps the significant environmental, community and social harm the development would produce. It highlights the lack of a coordinated approach to upgrading our energy systems and pays lip service to the diligent work of the Council and its communities making clear why this proposal is not acceptable."

"It is therefore clear that there is a huge disconnect between the planning process and the financial influences steering connection offers, with costs to the end-consumer carrying more weight in the decision-making process than the identified planning constraints raised in consultation for a proposed connection location. ESC also remains disappointed that offshore connection options are not being fully explored due to cost/targets, resulting in a significant amount of additional impact being imposed on the local communities within East Suffolk, many of whom are already fighting a barrage of development which will heavily impact their local communities for generations to come.

"The initial planning consent for the National Grid substation at Friston was to support Scottish Power's EA1N and EA2 projects alone not Sealink, Lionlink and now Nautilus. This evident lack of strategy and forward planning are not acceptable. Ofgem is excluding the huge social, environmental, community, economic impacts of imposing, (without consultation or any assessment of cumulative impacts) an energy superhub onto our countryside. Any proper cost/benefit analysis should quantify these impacts. East Suffolk countryside and communities are not the cheap option.

"Ofgem must accept the full costs of production, not pass these costs onto the communities and environment of East Suffolk. This means allowing Nautilus to proceed to the Isle of Grain, or better to take a strategic view whereby all these projects converging on one village are viewed as enough critical mass to justify offshore development and all the downstream cost efficiencies this would bring into play.

"We will be responding to the consultation in the strongest possible terms and will be seeking to meet with the new Suffolk Coastal MP, Jenny Riddell-Carpenter and government officials to once again press the case for a change in approach, to look for coordination and the development of other approaches, including an off shore ring main to enable the country to decarbonise whilst impacting the least harm possible on all communities and the precious areas in East Suffolk and along the east coast."

### Council responds to further consultation period on Sea Link energy project

East Suffolk Council has repeated calls for a coordinated approach to delivering the infrastructure required to support the proposed Sea Link project as National Grid begins a further stage of consultation.

The Sea Link project, being developed by National Grid Electricity Transmission (NGET), involves the reinforcement of the electricity transmission network between Suffolk and Kent.

While part of the project comprises a 122km offshore Direct Current (DC) link, a significant amount of onshore infrastructure is proposed, with landfall between Thorpeness and Aldeburgh, onshore cables, connection to the transmission network via either the proposed substation at Friston or via a new substation, and a 2GW converter station proposed near Saxmundham.

The onshore infrastructure will have significant environmental, social and economic impacts, both alone and cumulatively with other nationally significant projects being proposed in East Suffolk.

East Suffolk Council continues to call for a coordinated strategic approach to the delivery of the energy infrastructure, including a more rigorous approach to Offshore Coordination Support Scheme possibilities around coordinated offshore transmission infrastructure and alternative brownfield landfall locations that may be possible. Net Zero targets should not be used to remove these options from the discussion.

NGET recently announced a further consultation on the project, between 8 July and 11 August 2024. The focus on the consultation will be on changes proposed since the last consultation.

While East Suffolk Council welcomes further genuine engagement with stakeholders and the local community on Sea Link and all projects, it is important to ensure that the consultation is fair and provides a real ability for those affected to engage.

East Suffolk Council is disappointed by the length of the consultation comprising only five weeks – with previous consultations providing at least eight weeks – and has raised concerns that it is too short and does not allow the local community and stakeholders sufficient time to meaningfully engage with the consultation.

The timing of the consultation also clashes with the summer period when people may be on holiday and parishes may not have regular meetings planned, making reviewing the material and drafting of a response more challenging. While advance notice of the consultation by NGET was welcomed, the provision of a longer consultation period to facilitate a fairer and more effective consultation was requested.

Councillor Tom Daly, East Suffolk's Cabinet member for Energy and Climate Change, said: "Public perception of the process of NGET activities is key, as is made clear in the Sealink Community Update (April 2024).

"This very short timescale for meaningful consultation as Development Consent Order (DCO) options are refined, threatens positive public perception and effective engagement. It will be difficult to justify such a short engagement period that may not even span parish/town council meeting cycles, at this holiday time of year, as effective engagement. I would appeal to NGET to rethink this timeframe and extend, at least to the eight weeks taken previously".

### **Tens of thousands utilise Digital Towns programme**

**More than 80,000 people have logged onto free Wi-Fi while visiting East Suffolk towns during the first two years of a project to boost connectivity and business.**

The Digital Towns programme was launched by East Suffolk Council in June 2022 to support market towns through the installation of free public Wi-Fi, digital footfall counters and marketing platforms.

It followed a successful pilot in Framlingham and included a Digital Springboard service offering access to support, resources, workshops and grants for businesses hoping to create or strengthen online presence.

This June, two years since its launch, the programme was recognised among seven national finalists in the Digital Impact category of the Local Government Chronicle awards.

As well as more than 80,000 free Wi-Fi users, Digital Towns has attracted 20,000 promotional email subscriptions and logged millions of movements on footfall sensors designed to provide more insight into shopping habits to help towns and businesses improve the town centre experience.

Under the Digital Towns programme, free public Wi-Fi has been introduced in Aldeburgh, Beccles, Bungay, Felixstowe, Framlingham, Halesworth, Leiston, Lowestoft, Saxmundham, Southwold and Woodbridge, helping people save on the cost and potential interruption of mobile coverage, while encouraging them to stay in town centres for longer.

#### **[East Suffolk Free Wi-Fi](#)**

Subsequently collected data has provided the impetus for new town websites, marketing resources and bids to extend free Wi-Fi zones.

Supported by funding from the Getting Building Fund and New Anglia Local Enterprise Partnership's Innovative Projects fund, the technology has enabled better understanding around the number of visitors to towns, busiest periods, average time spent in town centres and much more – enabling East Suffolk Council's Economic Development team to provide tailored support for local businesses and provide data-based evidence to support ongoing projects. Meanwhile, the [Digital Springboard](#) has helped boost the digital skills and online presence of more than 200 businesses.

Cllr Toby Hammond, East Suffolk's cabinet member for Economic Development and Transport, said: "I'm delighted to see the Digital Towns programme having a measurable, positive impact on local businesses, with 71% of Digital Springboard users reporting improved performance and 70% of free Wi-Fi users saying the service improved their experience and encouraged them to stay longer.

"These discernible differences can help drive digital adoption and unlocks further potential benefits for our towns."

### **Celebrating and connecting culture in East Suffolk**

**A new network has been launched to connect creatives and celebrate the diversity of culture, arts and heritage on offer in East Suffolk.**

East Suffolk has a vibrant creative sector, with a wealth of local talent inspired by the district's beautiful coast, busy market towns and stunning rural landscapes. To highlight its commitment to culture, East Suffolk Council has now added the sector to the portfolio of Cllr Sarah Whitelock, now cabinet member for Communities, Culture, Leisure and Tourism.

The council has driven forward its Cultural Strategy and has now also created a new network for East Suffolk's creative industry. The 'Culture in East Suffolk' network and accompanying newsletter aims to improve communication between the cultural sector and share opportunities, funding information, events, business support and more. A new Cultural Development Lead Officer has been appointed to deliver this activity.

Cllr Sarah Whitelock said: "Culture plays an essential role in our district, providing important social, community, economic and reputational benefits. We recognise the transformative powers of culture in our places and communities and the opportunities it provides to come together with others, enhancing our quality of life and increasing overall wellbeing. Culture is thriving in East Suffolk and the amendment to my portfolio highlights its importance and the necessity to support the creative sector."

The council continues to support cultural sector organisations, projects, programmes, and regeneration projects in a variety of ways, including First Light Festival CIC, Lowestoft Post Office, the Cultural Quarter, Think Lowestoft, Lowestoft Town Hall, St Elizabeth Hospice Art Trail, Cultural Connections Volunteering as well as supporting many town events and community focused activities.

Cultural activities have also been offered through the Council's Holidays and Food (HAF) programme, which provides activities for children and young people during the school holidays. Museum visits, arts programmes and music activities have all been well received and help children build confidence and foster creativity.

East Suffolk Council's 2023 – 2028 Cultural Strategy, developed in partnership with stakeholders, is guiding the council's efforts to help the creative sector thrive, to increase children and young people's participation and ambition and create opportunities for residents to engage in cultural activities for their physical and mental wellbeing.

The 'Culture in East Suffolk' network is open to all cultural organisations and individual creators. Find out more and sign up at [www.eastsuffolk.gov.uk/culture-in-east-suffolk](http://www.eastsuffolk.gov.uk/culture-in-east-suffolk)

### **Suffolk To Host Final Stage of the Men's Tour of Britain in September**

East Suffolk will host the overall finish of the Lloyds Bank Tour of Britain Men this September, as Lowestoft and Felixstowe play host to Britain's biggest professional cycle race on Sunday 8 September.

It will mark the seventh edition of the men's Tour to have visited Suffolk, although the first time that the county has hosted the prestigious final stage of the event.

Full details of the stage route, which will start from the seafront in Lowestoft and take in many roads, villages, and towns familiar to the peloton from previous Suffolk stages, will be announced in the coming weeks.

To encourage communities along the route – which covers at least one community in all eight of our Community Partnership areas – to get involved, we have launched a **Tour of Britain Community Grant Fund** which will make small grants available to Town and Parish Councils, voluntary sector organisations and community groups for projects to encourage and celebrate cycling in the lead into the race and beyond. The grant fund of £20,000 is funded by the Council and the Community Partnership Board.

### Free holiday activities and food this summer

**Filmmaking, theatre, cooking, sport, mindfulness, STEM and outdoor adventure are just some of the free activities on offer during the school holidays across East Suffolk this summer.**

Numerous organisations across the district are providing fun and enriching activities and food as part of a programme of experiences for children and young people over the coming weeks. There are 46 programmes on offer with over 7,700 places available.

The Holiday Activities and Food (HAF) programme has been funded by the UK Government for three years providing over £200m per year for enriching activities for children and young people, particularly those in receipt of free school meals. The HAF programme is overseen by Suffolk County Council and coordinated locally by East Suffolk Council.

Holiday activities are varied and can introduce young people to new experiences and skills, from dance and drama to cooking and filmmaking, as well providing opportunities for physical and social activity.

In Suffolk, the programme is targeted at those eligible for benefits-related free school meals, and other vulnerable children, or those with additional needs who would benefit from accessing the programme.

Cllr Sarah Whitelock, East Suffolk Council's cabinet member for Communities, Culture, Leisure and Tourism said: "Holiday activity programmes enable young people to get involved in a wide range of different activities to help keep them active over the summer holidays, benefitting both their physical and mental health. The activities are a way for children to meet new people and learn new skills. They also provide support for families who may be struggling with the costs of food and energy during the school holidays."

Each funded holiday activity also offers a free meal, and places are redeemed by eligible families through the booking system Eequ. Families can select the programmes and dates they wish to attend, and which young people will be attending. The booking system will ask about HAF eligibility, and the booking will be reviewed and approved by the HAF team at Suffolk County Council.

Book a place now at <https://eastsuffolk.co/haf>

Activity providers include Kicks and Tricks Ltd, Abbeycroft Leisure, Premier Sports, the Football Fun Factory, Everyone Active, Kinda Education, Catch22, Oulton Broad Water Sports Centre, the Art Station, Footstars, Marina Theatre, Suffolk Wildlife Trust (Carlton Marshes), Suffolk Wildlife Trust (Foxburrow), Next Thing Education, East Suffolk Council, Xtra Time Sports Development, Earthwake, Ipswich Town FC, ASSET Education, Re-Utilise, Britten Pears Arts, Africa Alive, Offshoot, the PE Shed, Inspire Suffolk, MiniMe Mindfulness, Grow Cook Eat and Dialled Cycle works.

East Suffolk Council's Customer Services team is available to support anyone needing help completing the online booking form. The team can be called on 03330 162000.



## New planning guidance for healthy environments

A new planning document has been adopted in East Suffolk to help guide the delivery of healthier built environments.

The [Healthy Environments Supplementary Planning Document](#) (SPD) provides guidance on delivering more inclusive and higher quality living environments in East Suffolk, to improve the health and wellbeing of people of all ages, abilities, and incomes.

The SPD provides guidance on a range of topics including the provision of green open space, play provision, trees and landscaping, active travel infrastructure, healthy key buildings such as homes, schools and workplaces, dementia-friendly design, community facilities and more.

Ben Woolnough, Head of Planning and Coastal Management at East Suffolk said: “This document provides planning and design guidance to support the delivery of places which improve health and wellbeing outcomes for people living in East Suffolk. This includes supporting the provision of active travel infrastructure, food growing areas, more accessible and community spaces, as well as open and play spaces and much more. The document will now be a material consideration when determining planning applications in future.”

The SPD was subject to public consultation during its preparation and the comments received helped to inform the scope and content of the final document. The Consultation Statement, which has been published alongside the SPD, sets out the Council’s response to the comments received and the changes that were made to the SPD in response to comments.

## Ease the Squeeze on cost of living

Are you, or someone you know, worried about the increasing cost of living?

We understand the pressures faced by many people today and we are working closely with key partners to ensure support is available to help ease the squeeze for households in East Suffolk.

To make it as easy as possible for you to access the services and support available, locally and nationally, we have gathered information about them in one place:

**[www.eastsuffolk.gov.uk/community/squeeze/](http://www.eastsuffolk.gov.uk/community/squeeze/)**

For the most up to date information regarding East Suffolk Council, please visit: **[www.eastsuffolk.gov.uk](http://www.eastsuffolk.gov.uk)**



### **1. TEAGS – Stop Sizewell C**

TEAGS is challenging the Office for Nuclear Regulation's grant of a Nuclear Site License and has applied to the High Court for permission to submit the grant to Judicial Review. We await responses from ONR and the Interested Parties that include Sizewell C Ltd (SZC), Secretary of State (Ed Miliband, MP) and the Department of Energy Security and Net Zero.

The challenge follows two Pre-Application Protocol Letters sent separately by TEAGS and Together Against Sizewell C (TASC) concerning three grounds of challenge. In the end the TASC challenges have not been taken forward, but the TEAGS ground has.

The challenge does not seek to stop the development but questions whether the ONR have correctly granted the NSL and have sufficient/lawful regulatory control over the Hard and Soft Coastal Sea Defences and two new barriers that have recently been introduced in the final "proportionate reassessment of external hazards" that was undertaken just before the NSL was granted.

In the assessment the ONR have said that SZC would construct these new barriers should climate related sea level rise accelerate to the extent that predicted tidal surge related still water levels pose a risk to the 7.3m height of the power station platform from the northern, southern and western boundaries of the site, which are not protected by the 12.4m+ sea defences to the east.

Separately, residents of Sternfield were horrified to receive a letter dated 2<sup>nd</sup> August that their village was to be the source of SZC's interim and urgent fresh water supply, with water tankers starting delivery as soon as 19 August. Up to 44 HGV tankers a day - 6 an hour - could be required.

The first the Parish and Town Councils knew of this proposal was on the same day that residents received a letter from the SZC Leiston office. It appears that no consultation of the local Town and Parish Councils affected by this proposal was undertaken by SZC.

There are known issues with the route from Sternfield to Saxmundham and the A12 with the weak single file bridge to the northwest of the village having been raised as an issue by the interconnector projects that are proposed for the Saxmundham area. Further information about this is given in section 3 regarding SZC Forums.

### **2. Energy Projects Cumulative Impact Group and Anglia Energy Planning Alliance**

The letter from 25 Town and Parish Councils concerning the Department of Energy Security and Net Zero's commitment to meet with the councils concerning the cumulative impact of all the energy projects in this area, was delivered to the Secretary of State (Ed Miliband MP), Minister of State (DESNZ) Sarah Jones MP, Jenny Ridell-Carpenter MP and handed, in person, to Minister of State (DESNZ) Lord Hunt at a DESNZ Nuclear NGO meeting by Alison Downes the same day that the email was delivered. Lord Hunt acknowledged its receipt and said that he had seen the email delivery prior to the meeting start. We await a response.

### **3. B1122 planning discussions and SZC Deed of Obligation Forums**

The third Northern Transport Forum meeting was held on 7<sup>th</sup> August at Darsham Village Hall. The agenda included updates from SZC on the project and a number of specific updates regarding the Park & Ride sites, Yoxford roundabout and a Rail overview, including from an attendee from Network Rail.

Two points of order were raised with the chairman. Josie Bassinette (Walberswick) complained that she had not been sent the agenda and other papers prior to the meeting. Her name was also missing from the "Expected Council Representatives" list on the official agenda.

An action on SZC to provide updated Terms of Reference to Paul Collins (T&EPC) prior to being made public (item 3.2 of the meeting note) had not been actioned with SZC just posting them on the website but neglecting to inform me of the update. This was related to a review of the list of councils that are expected to attend these Forum meetings.

A long discussion about the Northern Park & Ride, the existing Darsham station car park, A12 level crossing and ticket machine was had. The plan is now for the public to be able to use the NPR when using Darsham Station and a footpath connection from the NPR to the existing A12 footpath, to the north of the station, will be created avoiding passenger having to cross the A12 at the level crossing.

The average speed cameras for the B1122 are still scheduled for Q1 2025 but SZC are trying to expedite the purchasing to bring this forward if they can.

Progress has been made in starting the formal process to have a 30mph speed limit in Eastbridge and consultants have been engaged by SZC to draw up the required reports for submission to SCC Highways for approval.

The East Suffolk Line will be closed between Saxmundham and Darsham for 9 days in May 2025 whilst the junction with the Leiston branch line is replaced. There will be a bus replacement service to cover this closure. There will also be staggered closures of level crossings on the Leiston branch line in Q2-Q3 2025 to introduce automatic barriers and other improvements at these crossings.

Once the branch line is operational in late 2025/early 2026, there will be four trains per day to the Ancillary Construction Area (east of Leiston Industrial Estate) which will travel through Saxmundham at night onto the branch line, then be held until 7:00am before being moved on into the ACA. The length of the trains will mean the Leiston B1122 level crossing being closed for ~3 minutes per train as they proceed slowly to the ACA.

The removal of the caravan site from the ACA will mean a change in traffic movements along Lovers Lane to the B1122. SZC will report updated figures for Lovers Land as a consequence of this change at the next NTF on 6<sup>th</sup> November.

In a conversation with David Peacop (SZC) after the meeting, he said that there are discussions about providing two caravan sites elsewhere to replace the one at the ACA but that discussions with East Suffolk Council and others regarding these proposals were still ongoing so he could not provide any further information at this time.

The Annual Forum will now be convened biannually, and the next forum is scheduled for 9<sup>th</sup> October at High Lodge in Darsham.

Compulsory purchase orders have now been notified and executed for the land that will be used for the site entrance roundabout at the top of Eastbridge Road, for the borrow pit and Round House at the norther end of Bridleway 19.

### **Water Tankers from Sternfield**

Initially there was an agenda item about Water Tankers on the NTF but then SZC skipped saying anything about it.

When this was raised by one of the local councillors, Marjorie Barnes stated that SZC have decided to review the plan.

So, the plan for the water tankers through Sternfield is going to be reviewed, although when we pressed Marjorie Barnes about what sort of review was being proposed, she would not be drawn further.

I asked why no consultation or engagement had occurred with Sternfield and Benhall PC, who are not represented on either the Northern or Southern Transport Forums, and what role SCC and ESC had played in the decision.

Neither of the ESC/SCC councillors present responded but Steve Merry (SCC Highways), chair of SZC Transport Review Group responded that the plan was reviewed by the TRG and that their response to the plan had been to turn the proposal down. He said that the decision was then sent one level higher to the Delivery Steering Group who overrode the TRG decision.

This really got the NTF council members annoyed, and various councillors impressed upon SZC that if this was going to be their modus operandi only 7 months into a 10-12 year project that getting any local councils to cooperate was going to be extremely difficult.

In discussion with residents in Sternfield it has become apparent from communications with East Suffolk Council that the reservoir which was to be the source is licensed for agricultural purposes. East Suffolk Council planning was not aware of the plan from SZC to source water from the agricultural reservoir.

Sternfield and Benhall Parish Council have now been invited to be represented on the Southern Transport Forum.

It will be interesting to see what happens next, but for now, no tankers through Sternfield and Benhall starting 19<sup>th</sup> August.

This will also prove potentially difficult for operations on the Ancillary and Temporary Construction Areas as SZC have stated that tinkered water supply is urgently needed for dust suppression on both sites.

#### **4. Scottish Power DCO Judicial Reviews**

Both Judicial Reviews have now been finished without any success for SASES or SEAS.

However, the two SPR projects seem to be moving forward at a snail's pace although construction is scheduled to start in 2024/25 according to the SPR website.

However, there is clear concern at National Grid regarding the timely construction of the Friston substation, to the extent that the SeaLink proposal also now has Friston Substation construction in its proposal, giving weight to concerns as to whether the Scottish Power windfarms will be built or started in time for the various interconnector projects.

I attended the SEAS councillors briefing at Westleton Village Hall on 12<sup>th</sup> July where Fiona Gilmore gave an update on the situation regarding the SPR projects and the three National Grid interconnector projects. I also attended a SeaLink briefing on Teams on 25<sup>th</sup> July. More details below.

#### **5. LionLink (formerly EuroLink) and Nautilus – National Grid Ventures**

It was thought that Nautilus (interconnector to Belgium) was going to make landfall in Essex, having originally been proposed to make landfall in Suffolk. It now appears that the Essex landfall is now no longer the plan and that Suffolk is once again likely to host the landfall. However, this project is still in the process of getting approval through OFGEM and is about 3.5 years behind SeaLink and LionLink, in terms of proposal preparation.

LionLink is due to proceed to its next stage of statutory consultation in early 2025 and has a target of Development Consent Order (DCO) application in late 2025.

Both LionLink and Nautilus propose to site their converter stations near Saxmundham and use the grid connection at the proposed Friston substation.

#### **6. Sea Link Interconnector – National Grid Electricity Transmission**

At the SeaLink briefing, it was confirmed that the Friston substation is included in their proposal to ensure that a grid connection is available for their converter station. It was also stated that there will be some temporary pylons constructed between the Saxmundham converter station and the Friston substation but eventually the cables will be underground. It was also confirmed that there will be weekend and bank holiday working during construction, but it was emphasised that this would not be every weekend or bank holiday.

Additional targeted consultation is underway concerning changes to the landfall and cable route north of Aldeburgh, the access route to the site across the river Fromus from the B1121 and an extension of some environmental mitigation along the Fromus. The project is planning to submit its DCO application in early 2025.

#### **7. Solar Farm between Friston and Snape**

There are rumours about a large (~400 hectares!) solar farm being planned in this area for connection to the Friston Substation. I'm trying to confirm this and will report further once I have the information confirmed.

#### **8. Hydrogen East/Capital Hydrogen**

No further information at this time.

## Appendix III – Theberton Speed Indicator Device Report 14<sup>th</sup> July 2024

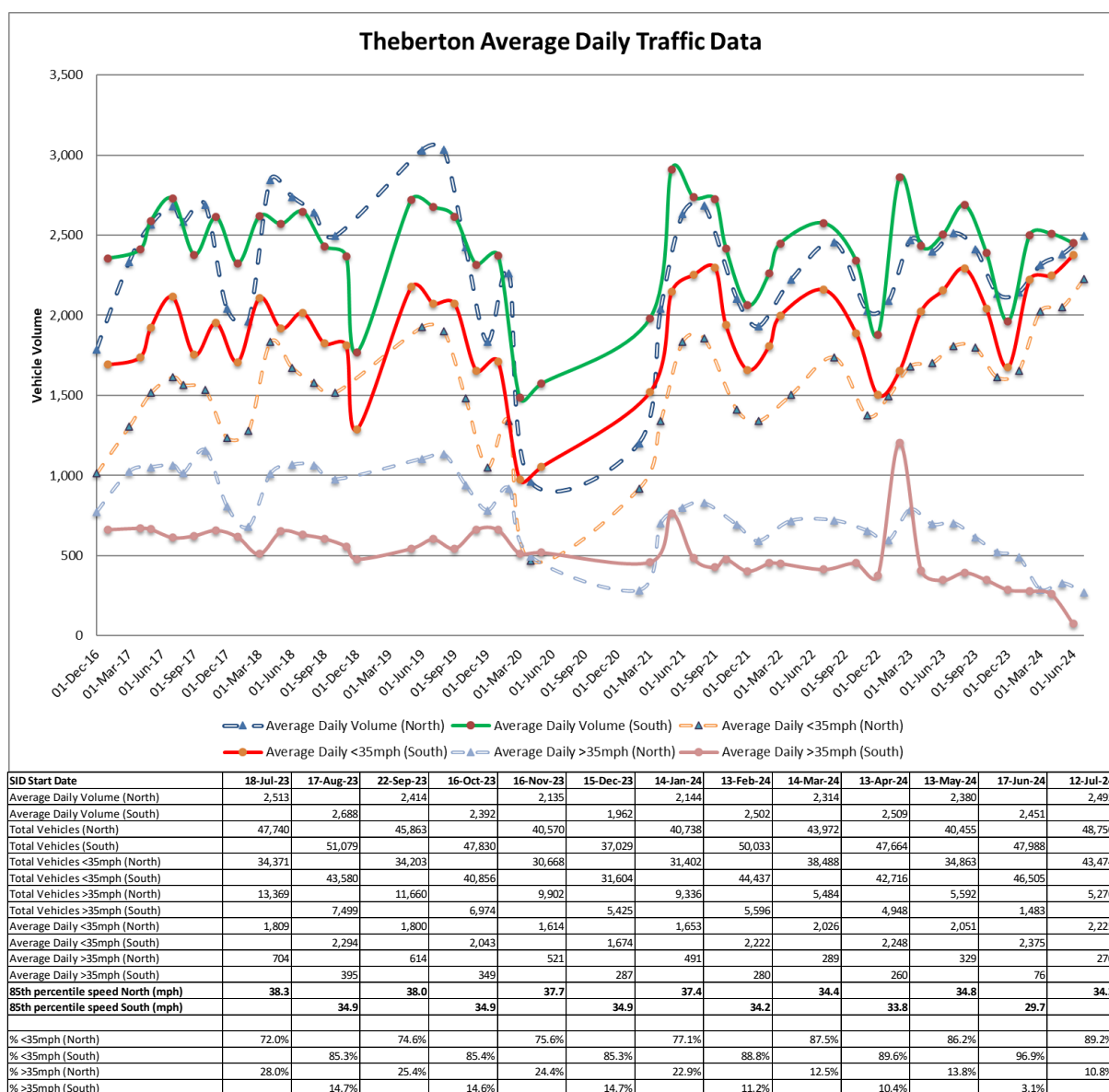
### Theberton Speed Indicator Device Report 14<sup>th</sup> July 2024

The speed indicator device has been operational for seventy-eight ~20-day periods since 20<sup>th</sup> December 2016. It is placed at one end of the village or other at ~30-day intervals.

Traffic volumes long-term averages for those exceeding 35mph is now **33.2%** from north and **21.8%** from south.

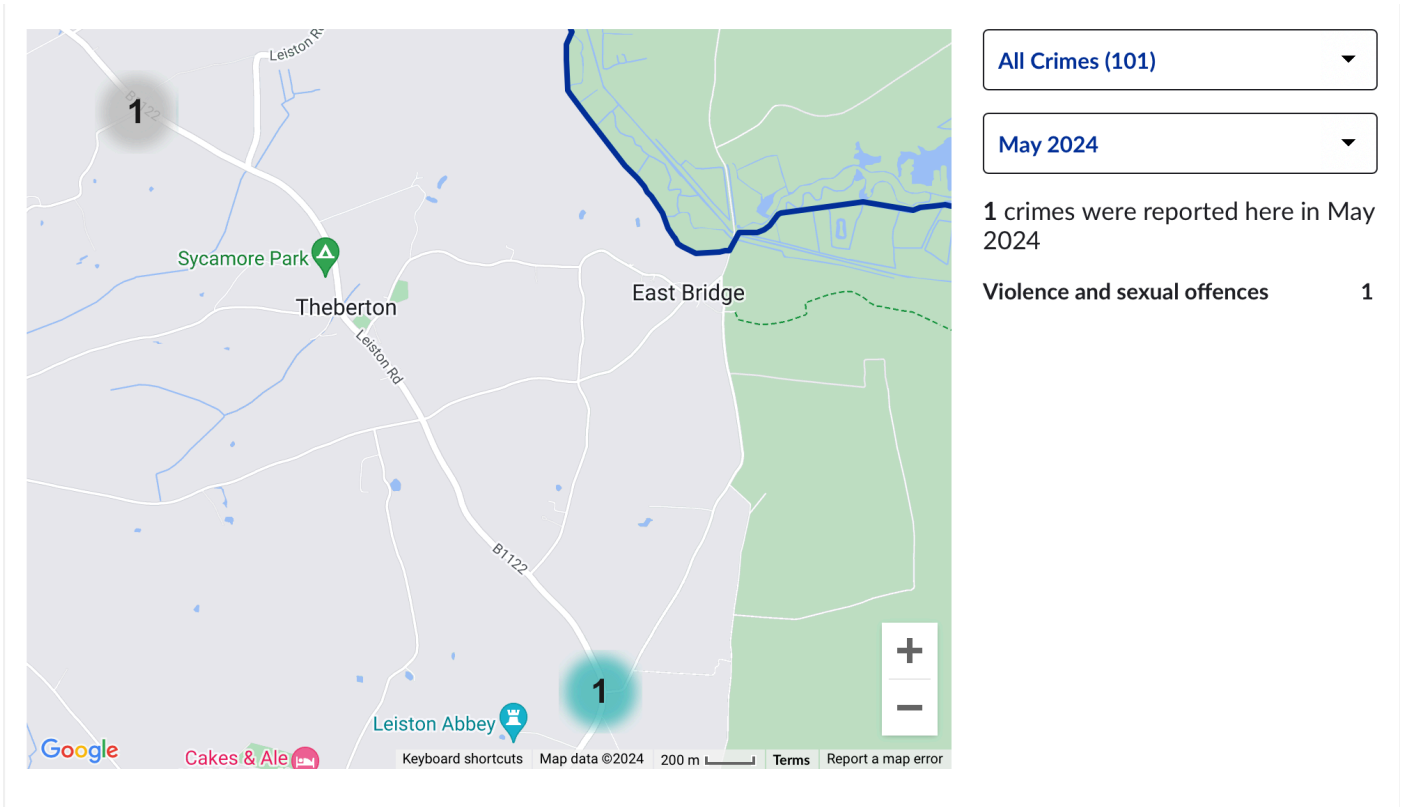
The **85<sup>th</sup> percentile speed\*** is **39.4mph** from North and **37.1mph** from South when they enter the village. These averages are over the whole period from December 2016.

There is a clear reduction in speed noticeable from 20<sup>th</sup> May when the enforceable 30mph speed limit came into effect. This has continued into this latest month and reductions in averaged speeds and 85<sup>th</sup> percentile speeds are on a downward trend..



\*The 85<sup>th</sup> Percentile is indicative of the speed that the majority of road users are travelling at.

Appendix IV – May Police Crime Report



Appendix V – June Police Crime Report

